

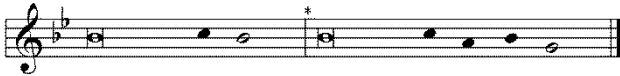
Service Insert

for Trinity 15
September 8, 2024

THE INTROIT *(after the Absolution)*

Ps. 86:1a,2b,3; Psalm 86:4

- P** *(Antiphon)* Bow down Your ear, O LORD, | hear me; *
You are my God; Save Your servant | who trusts in You!
Be merciful to me, | O Lord, *
For I cry to | You all day long.



- C** Rejoice the soul of Your | servant, *
For to You, O Lord, I | lift up my soul.

Musical notation for the Gloria, consisting of three staves with a treble clef, a key signature of two sharps (D major), and a common time signature. The lyrics are written below the notes.

Glo - ry be to the Fa - ther and to the Son
and to the Ho - ly Spirit; as it was in the be - gin - ning,
is now, and ev - er shall be, for - ev - er - more. A - men.

- P** *(Antiphon)*

THE GRADUAL & VERSE *(after the Epistle)*

Ps. 118:8-9; Ps. 108:1

- P** It is better to trust in | the LORD *
Than to put con- | fidence in man.
- C** It is better to trust in | the LORD *
Than to put confi- | dence in princes.
- P** Alle- | lu - ia. *
Al- | — le - lu - ia.
- C** O God, my heart is steadfast; I will sing and | give praise, *
even with my glory. | Al - le - lu - ia.

Musical notation for the Alleluia, featuring a single staff with a treble clef, a key signature of two sharps (D major), and a common time signature. The melody consists of quarter and eighth notes.

Al - le - lu - ia! Al - le - lu - ia! Al - le - lu - ia!

